

**Fig. I** Geomorphological map of the Rajucolta Valley. Yellow numbers indicate hanging valleys, light blue number shows water level of the lake, A – rockfall referred in the text



**Fig. II** Photo of the Uruashraju Lake taken from the moraine to the west. On the right site of the photo are visible debris flows source areas with accumulations



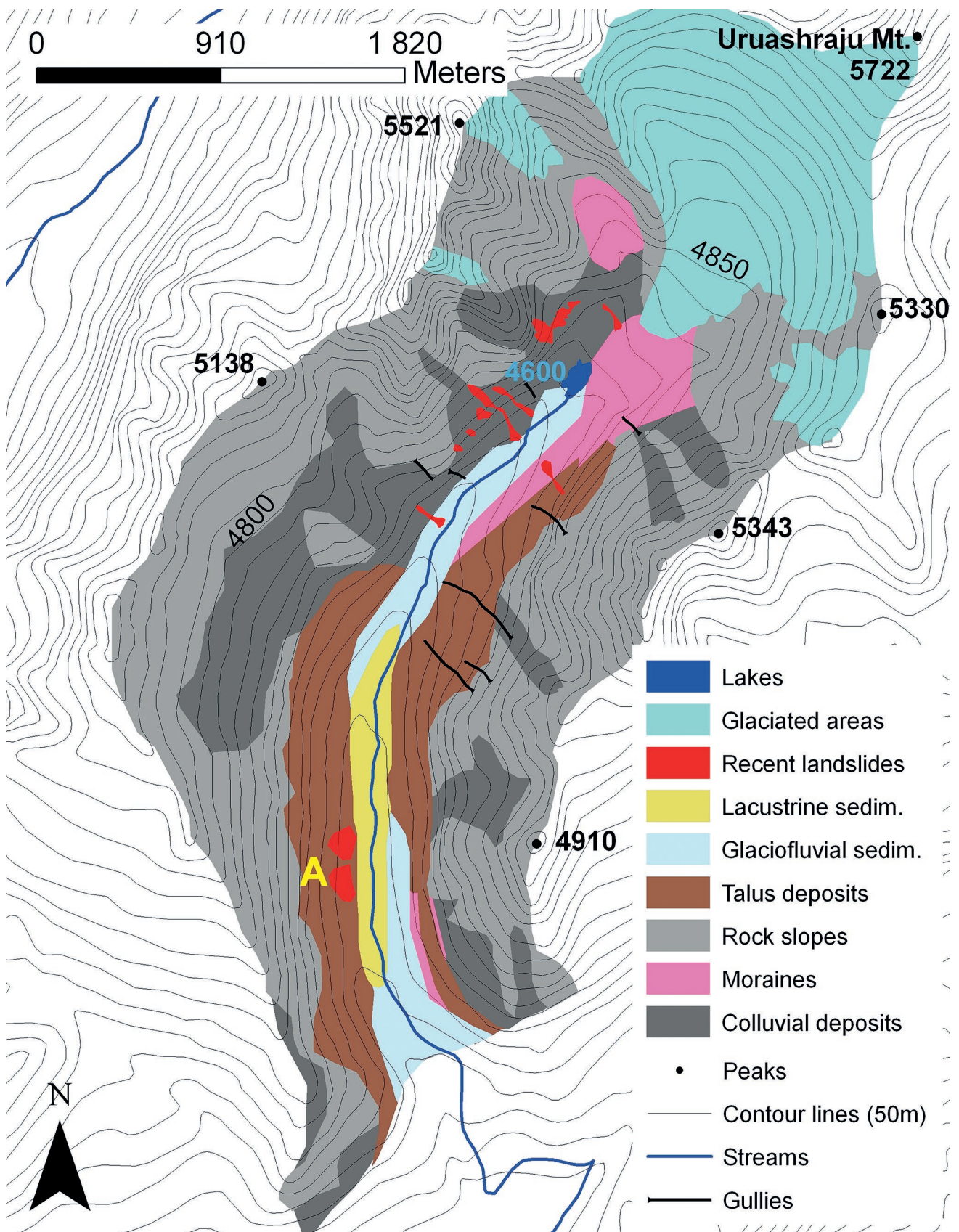


Fig III Geomorphological map of the Pumahuaganga Valley. Light blue number shows water level of the lake, A – rock slide accumulations